

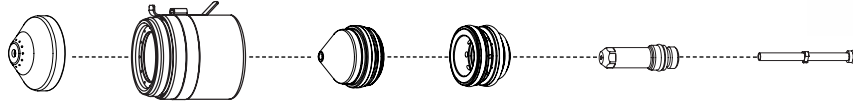
# Hypertherm®

## MAXPRO200®



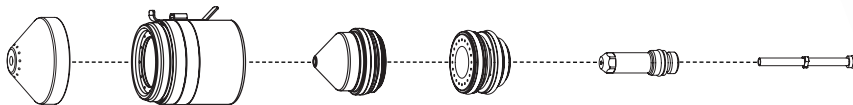
### MAXPRO200 machine torch consumables

#### Air – Mild steel/Stainless steel/Aluminum



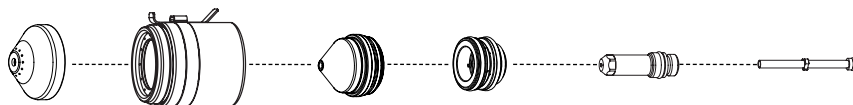
	Shield	Shield cap	Nozzle	Swirl ring	Electrode	Water tube
<b>50 A</b>	220532	220936 220935 without tab	220890	220529	220528	220521
<b>130 A</b>	220536	220936 220935 without tab	220892	220488	220487	220521
<b>200 A</b>	420045	220936 220935 without tab	420044	220488	220937	220521

#### O<sub>2</sub> – Mild steel



	Shield	Shield cap	Nozzle	Swirl ring	Electrode	Water tube
<b>50 A</b>	220532	220936 220935 without tab	220891	220529	220528	220521
<b>130 A</b>	220491	220936 220935 without tab	220893	220488	220487	220521
<b>200 A</b>	220832	220936 220935 without tab	220831	220834	220937	220521

#### N<sub>2</sub> – Stainless steel/Aluminum



	Shield	Shield cap	Nozzle	Swirl ring	Electrode	Water tube
<b>130 A</b>	220536	220936 220935 without tab	220892	220529	020415	220521
<b>200 A</b>	420045	220936 220935 without tab	420044	220529	020415	220521



MAXPRO200 quick-disconnect machine torch



MAXPRO200 straight machine torch

#### TECHNOLOGIES

- Chambered Swirl Ring**
- Conical Flow™**
- CoolFlow™**
- LongLife®**
- TrueFlow™**
- Vented Shield**
- HyLife®**
- Tool free lead connection**
- Tool free nozzle**
- Inline valve process**

# MAXPRO200<sup>®</sup>

## Machine torch assembly options

### Standard leads

Lead length	Part number
7.5 m (25')	229477
15 m (50')	229478
23 m (75')	229479
30 m (100')	229480

### Mounting sleeves

Description	Length	Diameter	Part number
Standard	279.4 mm (11")	50.8 mm (2")	220943
Standard	279.4 mm (11")	44.45 mm (1.75")	220942

### Torch options

Description	Part number
Straight torch (standard)	420087
Quick-disconnect receptacle (option)	420033

### HyPro2000 Quick-disconnect torch (option)

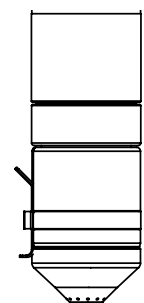
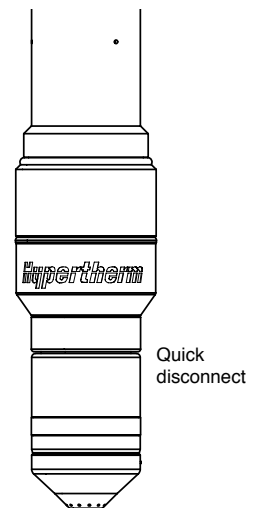
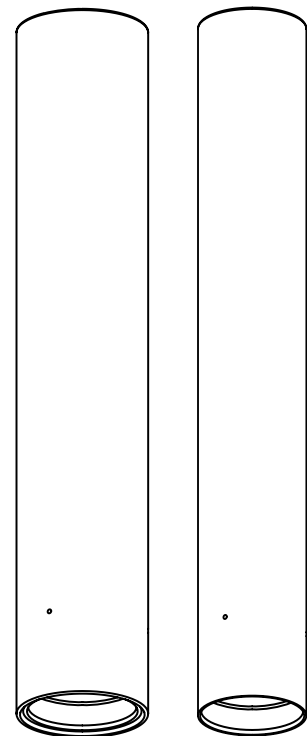
220921

### Additional parts available (not shown)

Machine torch (straight torch, set of 200 A consumables)	228937
Consumables removal tool	104119
Machine torch consumables starter kit	428013
Silicon lubricant for o-rings	027055

Mounting sleeve  
(2" outside  
diameter)

Mounting sleeve  
(1.75" outside  
diameter)



MAXPRO200  
torch

Hypertherm, MAX, Conical flow, CoolFlow, HyLife, LongLife, and TrueFlow are trademarks of Hypertherm Inc. and may be registered in the United States and/or other countries

# Hypertherm<sup>®</sup>

[www.hypertherm.com](http://www.hypertherm.com)